

RAPPAHANNOCK COUNTY PARK
7 PARK LANE
WASHINGTON, VIRGINIA 22747

BASE DATA:
 This plan, reliable in concept only, shows with realistic accuracy the best information available during Master Plan study. No precise relationship of topographical features location or property boundary is implied. Any matter requiring legal, regulatory, physical and topographic precision, must be predicated upon a professional survey or qualified contractor's field work.
 Fall 2018: augmented with Monroe and Crocker, PC field work
 Summer-Fall 2019: NODR measurements incorporated
 Aug 22-Fall 2019: LIDAR topographic imagery, property boundary and ROW data overlays compiled by Marsh & Lange Land Surveyors, PLLC, Winchester, VA
 Dec 27, 2020: Property boundary by Robert L. Boykin, Jr. L.S.

LEGEND

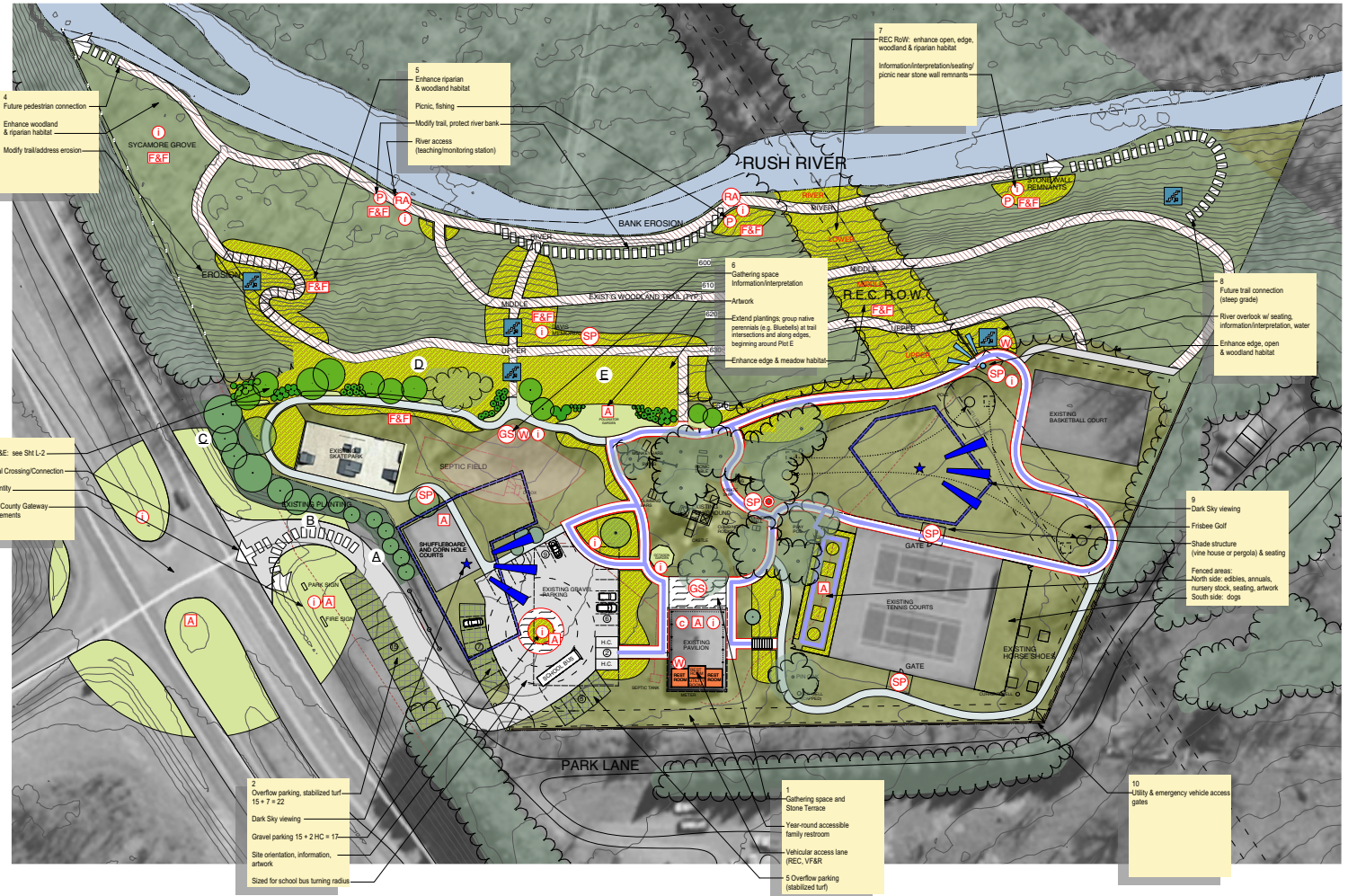
- (A) PLOT A PLANTING AREA
- (B) PLOT B PLANTING AREA
- (C) PLOT C PLANTING AREA
- (D) PLOT D PLANTING AREA
- (E) PLOT E PLANTING AREA
- (A) ARTWORK
- (F&F) ENHANCE FLORA & FAUNA HABITAT
- (GS) GATHERING SPACE
- (I) INFORMATION
- (P) PICNIC
- (RA) RIVER ACCESS
- (SP) STOPPING PLACE
- (W) WATER
- (FUTURE PLANTING)
- (STONE PAVEMENT)
- (ACCESSIBLE PATH PHASE ONE)
- (PATH)
- (WOODLAND TRAIL)
- (DARK SKY VIEWING)

MONROE AND CROCKER, P.C.
 LANDSCAPE ARCHITECTS, DESIGNERS AND ENGINEERS
 P.O. Box 722 Flint Hill, Virginia 22627
 TEL: (640) 636-4505
 EMAIL: MCR@MCRANDCROCKER.COM

SCALE:
 AS SHOWN
DATE:
 10/23/19 Review Meeting
 12/12/19 Review Meeting
 2/12/20 Submission
PROJECT #:
 604-01

MASTER PLAN CONCEPT

SHEET:
 L-1 of 2



4 Future pedestrian connection
 Enhance woodland & riparian habitat
 Modify trail/address erosion

5 Enhance riparian & woodland habitat
 Picnic, fishing
 Modify trail, protect river bank
 River access (teaching/monitoring station)

7 REC ROW: enhance open, edge, woodland & riparian habitat
 Information/interpretation/seating/picnic near stone wall remnants

8 Future trail connection (steep grade)
 River overlook w/ seating, information/interpretation, water
 Enhance edge, open & woodland habitat

9 Dark Sky viewing
 Frisbee Golf
 Shade structure (vine house or pergola) & seating
 Fenced areas:
 North side: tables, annuals, nursery stock, seating, artwork
 South side: dogs

3 Plots D&E: see SH L-2
 Potential Crossing/Connection
 Site Identity
 Town & County Gateway Enhancements

2 Overflow parking, stabilized turf, 15' x 7' x 22'
 Dark Sky viewing
 Gravel parking 15' x 2 HC x 11'
 Site orientation, information, artwork
 Sized for school bus turning radius

1 Gathering space and Stone Fence
 Year-round accessible family restroom
 Vehicular access lane (REC. VFAR)
 5 Overflow parking (stabilized turf)

10 Utility & emergency vehicle access gates

6 Gathering space
 Information/interpretation
 Artwork
 Extend plantings: group native perennials (e.g. Bluebelles) at trail intersections and along edges, beginning around Plot E
 Enhance edge & meadow habitat